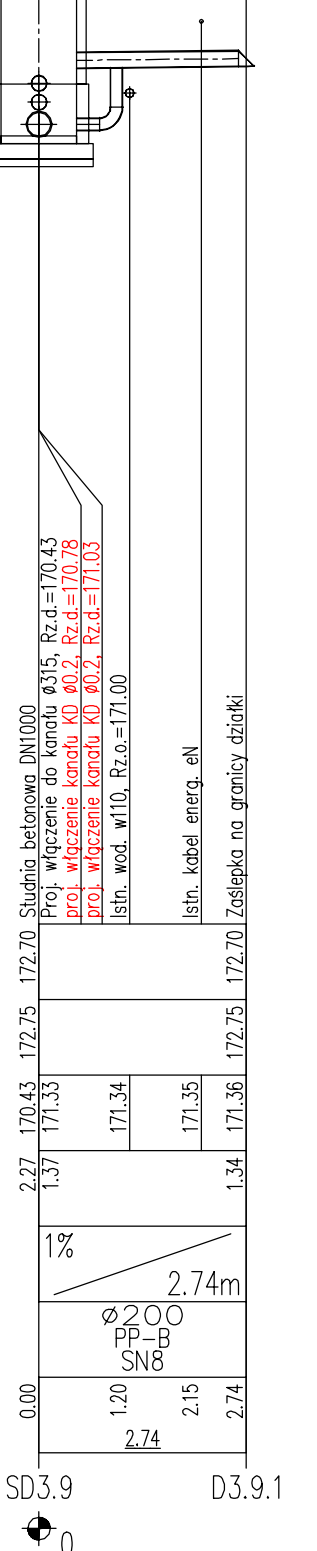
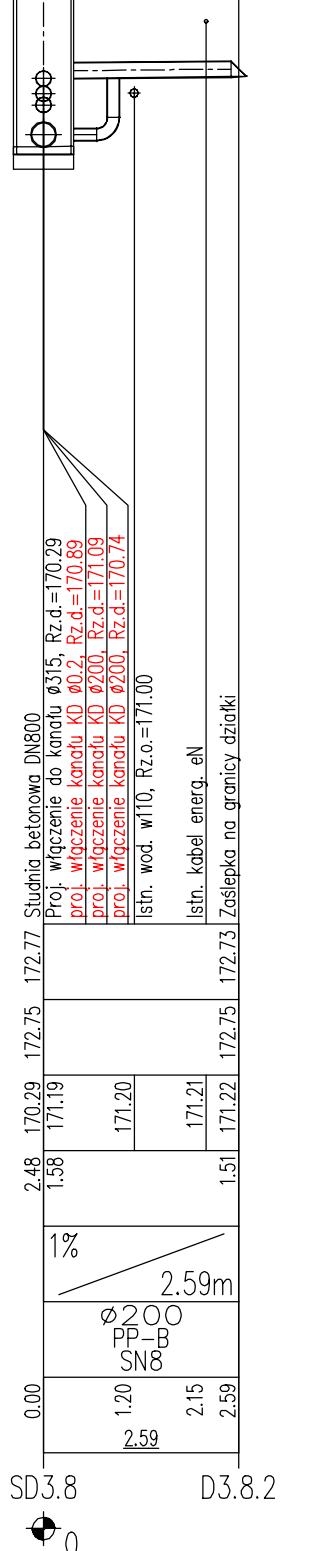
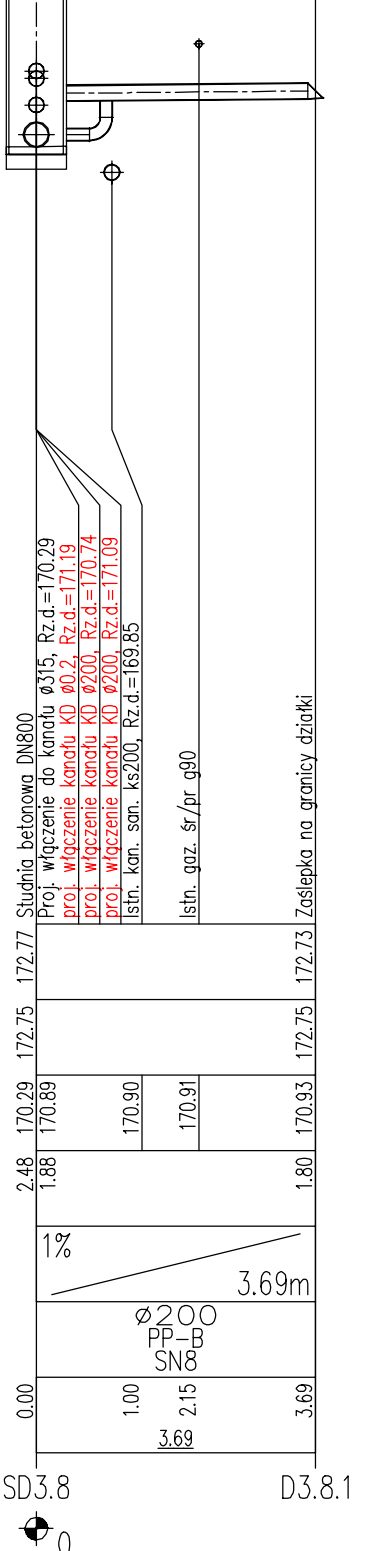
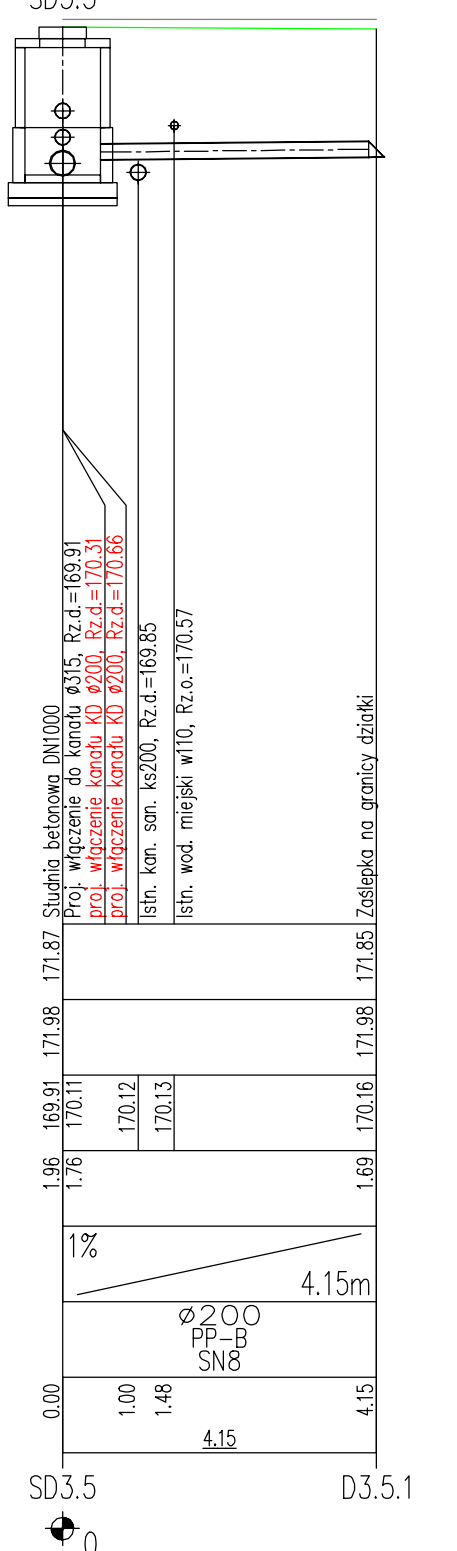
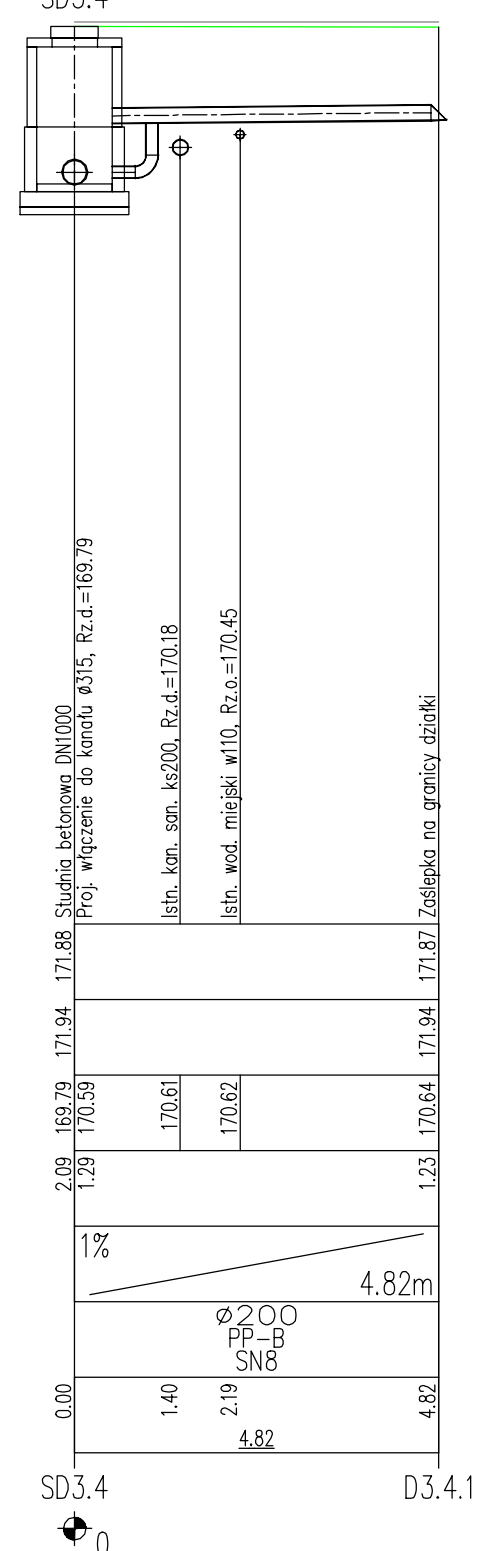
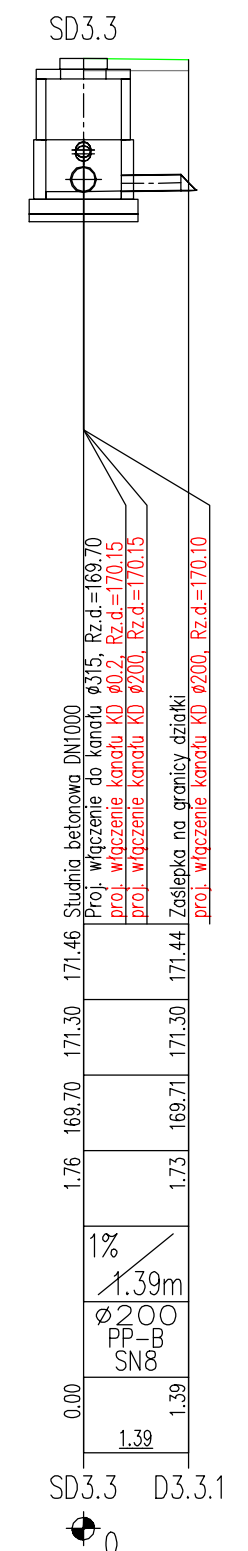
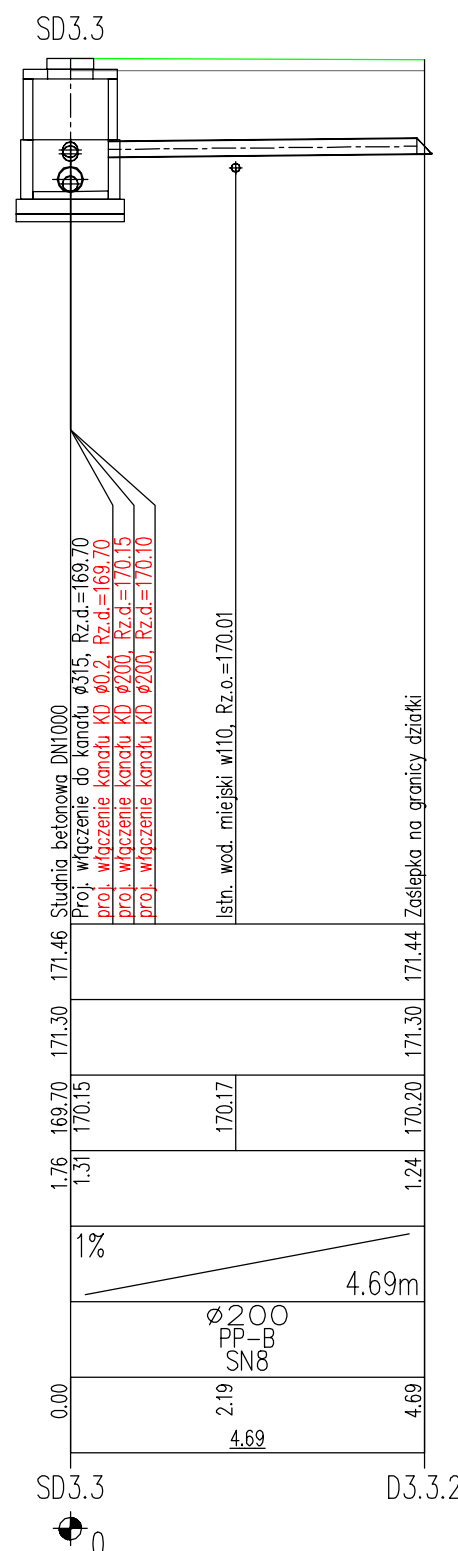
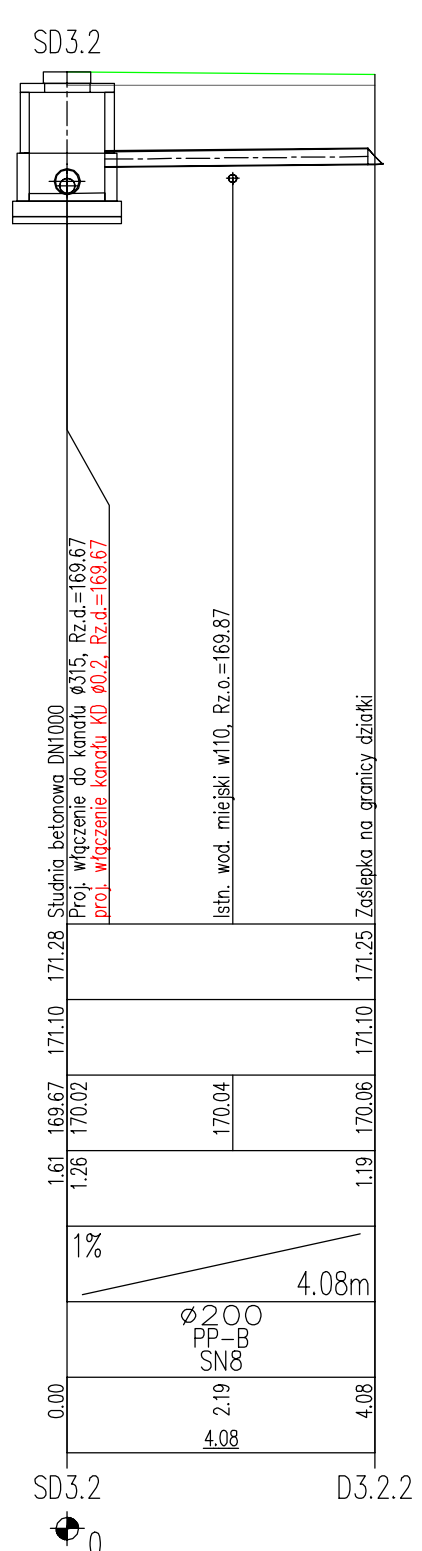
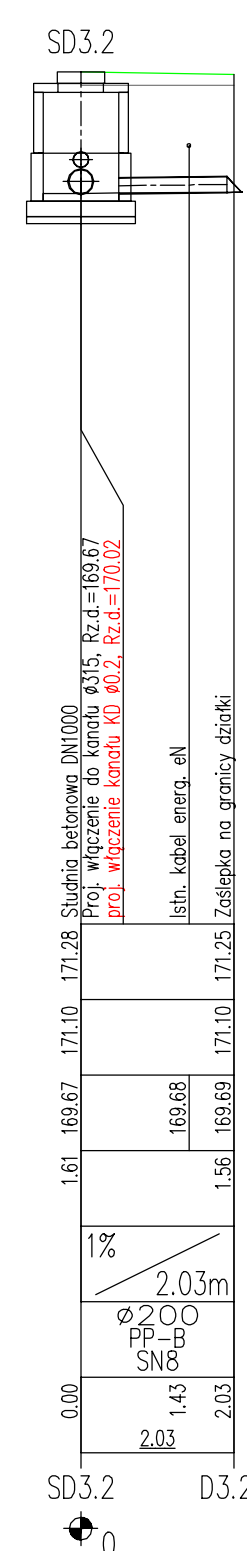
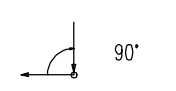
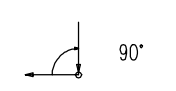
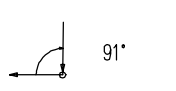
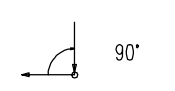
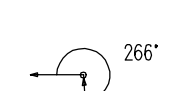
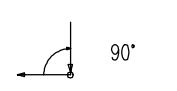
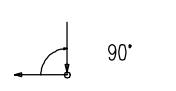
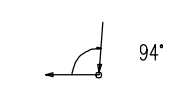
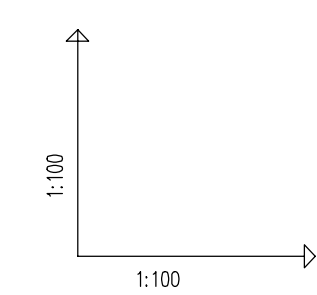


| POZIOM PORÓWNAWCZY     |  | 160.00 m n.p.m. |  |
|------------------------|--|-----------------|--|
| PROJ. RZĘDNA TERENU    |  |                 |  |
| RZĘDNA TERENU ISTN.    |  |                 |  |
| RZĘDNA DNA KANAŁU      |  |                 |  |
| ZAGŁĘBIENIE DNA KANAŁU |  |                 |  |
| SPADKI, DŁUGOŚCI       |  |                 |  |
| ŚREDNICA, MATERIAŁ     |  |                 |  |
| ODLEGŁOŚCI             |  |                 |  |
| HEKTOMETRY             |  |                 |  |



|                      |                                                                                             |                 |         |         |
|----------------------|---------------------------------------------------------------------------------------------|-----------------|---------|---------|
| INWESTOR             | Prezydent Miasta Kędzierzyn-Koźle<br>ul. Grzegorza Prąmowicza 32<br>47-200 Kędzierzyn-Koźle |                 |         |         |
| JEDNOSTKA PROJEKTOWA | <b>DROG - PLAN</b><br>Przemysław Dąbala<br>ul. Styki 5/2, 49-200 GRODKÓW                    |                 |         |         |
| TEMAT                | "Budowy drogi dojazdowej do posesji ul. Wyspiańskiego od nr 28 do nr 40"                    |                 |         |         |
| Nazwa rys.           | <b>PROFIL PODŁUŻNY KANALIZACJI DESZCZOWEJ wpusty - część I</b>                              |                 |         |         |
| Branża               | Zespół projektowy                                                                           | Nr uprawnień    | Podpis  |         |
|                      | mgr inż. Agata Kudowska                                                                     | 365005/10       |         |         |
| Projektant           | mgr inż. Marcin Krzyż                                                                       | OPU/1615/PBS/18 |         |         |
|                      | Sprawdzający                                                                                |                 |         |         |
| Projektant           |                                                                                             |                 |         |         |
|                      | Sprawdzający                                                                                |                 |         |         |
| Projektant           |                                                                                             |                 |         |         |
|                      | Sprawdzający                                                                                |                 |         |         |
| FAZA                 | SKALA                                                                                       | BRANŻA          | DATA    | NR RYS. |
| PW                   | 1:100/100                                                                                   | instalacyjna    | 05.2021 | S.3.1   |